

ATTRIBUTES OF PROBLEMS & DECISION-MAKING

Redefining Successful Organizations, Businesses
& Consultants From The Rest

Gain deeper insights to lead & achieve your purpose

DIFFICULTY



1

Range from *simple* to *wicked* or *complex*. This attribute depends on completeness of knowledge, number of people, information including opinions, and economics. What is known about the problem or decision?

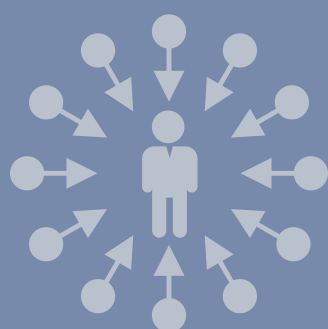
GRAVITY



2

Range from not serious or near zero concern to traumatic or dire. Is the problem or decision and decision-making of little to no concern or of critical concern?

FAMILIARITY OR PROXIMITY



3

Range from personal to global including community. Who and how does the problem or decision affect: me, family, department, organization, community, state, nation, globe?

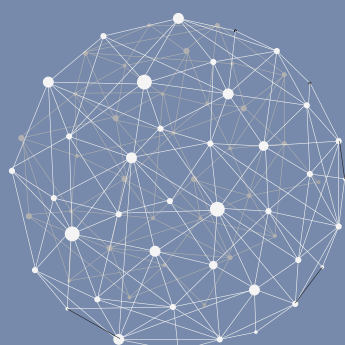
SCALABILITY OR REPLICABILITY



4

Range from *non-transference* to *fully transferable* or *expandable* to other problems or decisions. Is this a 1-off or single event or could it cascade or continue?

SYSTEMICITY



5

Range from a *single component* to *system wide* or *broad ranging*. How does the problem or decision relate to the whole system?

IMPACT



6

Range from *no effect* or *subtle* to *catastrophic* or *imminent*. Could the problem or decision have effects in other areas?

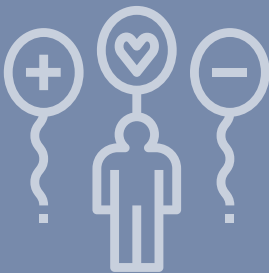
VIABILITY



7

Range from *short-lived* to *long future*. Is the problem solvable or the decision implementable?

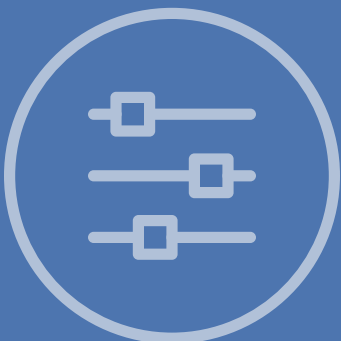
ACCEPTABILITY OR DESIRABILITY



8

Range from *selfish* to *widespread acceptance* or *buy-in* or *group consensus*. Is the problem or decision the most desirable and by whom?

PLIABILITY



9

Range from *alterable* to *immovable*. Is the problem or decision easily adjustable, changeable or alterable, or is it set or firmly established?

RATIONALITY



10

Range from *rational, sensible* or *logical* to *irrational* or *illogical*. Is the problem or decision structured or unstructured or messy?

The 10 Attributes will be affected or influenced by both *time* and the *agility* of the problem solvers and decision-makers in their response to problems or decisions as well as to the people involved. Response to problems and decisions, including decision-making, ranges from *immediate* or *quick* to *stalled* or *slow*, and from *facile* or *flexible* to *fumbling*, *flailing* or *dysfunctional*.

